

FREE

# Heritage Open Days in Kirklees



heritage open days

## 59 FREE EVENTS in Kirklees, 10-19 September 2021

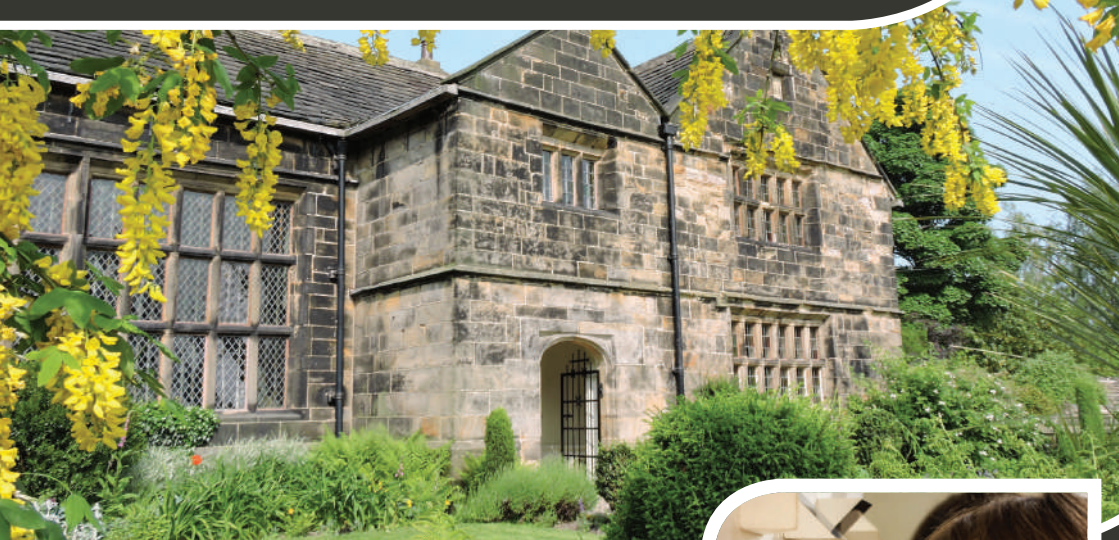


**Hi! CULTURE**



# DISCOVER INSPIRATIONAL STORIES, STUNNING ART & HERITAGE

at Kirklees Museums & Galleries



- Fascinating exhibitions
- Relaxing gardens & parks
- Great coffee & unique gifts


BAGSHAW MUSEUM | BATLEY

OAKWELL HALL & COUNTRY PARK | BIRSTALL

TOLSON MUSEUM | HUDDERSFIELD



Follow us on

 Kirklees Museums & Galleries

 @KirkleesMuseums



For further details visit: [www.kirklees.gov.uk/museums](http://www.kirklees.gov.uk/museums)





# About Heritage Open Days

Heritage Open Days is England's biggest festival of history and culture. Each September, thousands of sites across the country invite you in to explore local treasures of every age, style and function, and many special events are held. It's your chance to see hidden places and try out new experiences – and it's all FREE.

In 2020 the festival went ahead but was much restricted by the pandemic. While not quite reaching the heights of 2019, this year will see a fuller Kirklees programme and, alongside old favourites, there are over 20 new entries, many of them celebrating this year's national theme, **Edible England**. Some events are also part of the **Huddersfield High Street Heritage Action Zone cultural programme** centred on St George's Square. All events are organised independently with support from the Kirklees HOD Committee, which has prepared this brochure.

Many events are open access but some have to be booked. Bookable events are identified in the brochure with details of how to book (there is no centralised booking system this year). Please respect this: if you don't book and there are no spaces on the day, you **will** be turned away. All events will of course be managed in accordance with any Covid restrictions in force at the time.

Every effort has been made to ensure that details in this brochure are correct at the time of going to press but sometimes things change, and we have all got used to changing plans over the last 18 months. **If you are planning to visit a site, do check [www.heritageopendays.org.uk](http://www.heritageopendays.org.uk) for updated information.**

**Heritage Open Days** is coordinated by the National Trust and funded by players of the People's Postcode Lottery.

**Kirklees HOD Committee** is a partnership of Discover Huddersfield, Friends of Crow Nest Park (Dewsbury), Holme Valley Civic Society, Huddersfield Civic Society, Huddersfield Local History Society, Kirklees Libraries and Museums services and Spen Valley Civic Society. As well as paid adverts, financial support is gratefully acknowledged from:

- Kirklees Councillors' Local Project Funds for the Denby Dale, Dewsbury and Kirkburton Wards.
- The Huddersfield Place Partnerships 'From the Front Door' project, led by Huddersfield Ward Councillors.
- Historic England funding to Kirklees Council for the Huddersfield High Street Heritage Action Zone.

Thanks are also due to participating sites for images, and to Kirklees Museums & Galleries for permission to reproduce the image on p. 15.

## Key

- Parking Disabled parking Accessible toilets Assistance dogs welcome Refreshments
- Hearing loop Children's/family activities available Dogs welcome Partial wheelchair access
- Full wheelchair access Pushchair/pram friendly Toilets Baby changing/Breast feeding area



Listings are accurate at time of going to press.

Please visit [www.heritageopendays.org.uk](http://www.heritageopendays.org.uk) for updated information.

Events highlighted in green contribute to the **Edible England** theme and those highlighted in pink are part of the **Huddersfield High Street Heritage Action Zone**.

SITE / EVENT	MUST BE BOOKED?	FRI 10	SAT 11	SUN 12	MON 13	TUE 14	WED 15	THUR 16	FRI 17	SAT 18	SUN 19
		<b>BATLEY, BIRSTALL &amp; SPEN VALLEY - PAGES 6-7</b>									
All Saints Church, Batley											✓
Bagshaw Museum, Batley			✓	✓						✓	✓
Oakwell Hall, Birstall			✓	✓						✓	✓
Red House Yorkshire (online)		✓	✓	✓	✓	✓	✓	✓	✓	✓	✓
St Peter's Church, Hartshead										✓	✓
St Saviour's Church, Brownhill			✓								
Spen Valley's Food and Drink Heritage										✓	
Whitechapel Church, Cleckheaton			✓	✓							
<b>COLNE VALLEY - PAGES 8-9</b>											
Colne Valley Museum			✓	✓							
Edibles, West Slaithwaite - open garden										✓	✓
St Bartholomew's Church, Marsden										✓	✓
St James's Church, Slaithwaite										✓	
St John's Church, Golcar			✓								
<b>DEWSBURY &amp; THORNHILL - PAGES 9-11</b>											
Crow Nest Park	YES ON 11TH		✓					✓			
Dewsbury: a taste of the outdoors											✓
Dewsbury Bee Line Walk	YES		✓								
Dewsbury Country Park Tree Walk	ADVISED									✓	
Dewsbury Town Hall	YES		✓								
John Greenwood Clothing & Jewellery	YES		✓							✓	
Thornhill Parish Church			✓	✓							
<b>HOLME VALLEY &amp; MELTHAM - PAGES 11-12</b>											
Holmfirth Graveyard Walk & Talk	YES			✓							
How green is our Holme Valley walk	YES	✓									
Meltham's Historic Landscape talk			✓								
Meltham in Focus - Carlile Institute				✓							
St Mary's Church, Honley			✓								
SITE / EVENT	MUST BE BOOKED?	FRI 10	SAT 11	SUN 12	MON 13	TUE 14	WED 15	THUR 16	FRI 17	SAT 18	SUN 19

# to Kirklees events, 10 - 19 September 2021

SITE / EVENT	MUST BE BOOKED?	FRI 10	SAT 11	SUN 12	MON 13	TUE 14	WED 15	THUR 16	FRI 17	SAT 18	SUN 19
		<b>Huddersfield Town Centre – Pages 13-19</b>									
A great Victorian architect? - W.H. Crossland talk	YES				✓						
Buildings of the C19 New Town walk	YES									✓	
Carnival celebrates Huddersfield			✓								
Exploring the Town's Ramsden Heritage walk	YES		✓								
Family signwriting workshop	YES		✓								
Huddersfield Heritage Hub			✓		✓	✓		✓	✓		
Huddersfield Heritage Mile walks	YES				✓	✓	✓	✓	✓		
Huddersfield Heritage 5K run	YES						✓				
Huddersfield Textile walk	YES			✓							
Huddersfield Town Hall	YES									✓	
The Irish in Huddersfield walk	YES										✓
Kirklees Archives Open Day					✓						
Lawrence Batley Theatre	YES	✓	✓					✓			✓
Platform 1 Mental Health Services		✓			✓		✓	✓	✓		
Run for the Mills talk	YES						✓	✓			
St Peter's Parish Church	YES for guided tours				✓	✓	✓	✓	✓		
Townsounds Street Party									✓	✓	
<b>Huddersfield Outside the Ring Road - Pages 19-22</b>											
All Hallows Church, Almondbury			✓	✓							
Allotments, Orchards, Dikes and Shrogs walk	YES						✓				
Beaumont Park walks				✓							✓
Celebration of Wild Plants, Dalton										✓	✓
King James's School, Almondbury										✓	✓
Lindley Clock Tower			✓								
St Hilda's Church, Cowcliffe			✓								
St John's Church, Birkby		✓	✓						✓	✓	
St Stephen's Church, Lindley										✓	✓
Tolson Museum			✓	✓						✓	✓
Victoria Tower, Castle Hill										✓	✓
Udders Orchard Cidery, Lindley	YES		✓								
Walking the Banks of the River Colne	YES		✓								
<b>Kirkburton &amp; Denby Dale - Pages 22-23</b>											
All Hallows Church, Kirkburton			✓								
Emmanuel Church, Shelley										✓	
High Flatts Quaker Meeting House								✓	✓	✓	✓
Skelmanthorpe Textile Heritage Centre	YES							✓	✓	✓	✓
SITE / EVENT	MUST BE BOOKED?	FRI 10	SAT 11	SUN 12	MON 13	TUE 14	WED 15	THUR 16	FRI 17	SAT 18	SUN 19

## Open Events in Batley, Birstall & Spenn Valley

### All Saints Parish Church

Stocks Lane, Batley, WF17 8PA

**SUN 19TH 12.30 PM – 4 PM**

A Grade I listed building with a fine heritage dating back to an entry in the Domesday Book. Visitors will be able to explore the history of the church with the guidance of a leaflet and learn about its heritage and how/why it was built. As a town centre church, All Saints holds an important place in the local community.

[www.batleyparishchurch.org](http://www.batleyparishchurch.org)



#### EDIBLE ENGLAND EVENT

### Bagshaw Museum

Wilton Park, Batley, WF17 0AS

**SAT 11TH 12 PM – 5 PM**

**SUN 12TH 12 PM – 5 PM**

**SAT 18TH 12 PM – 5 PM**

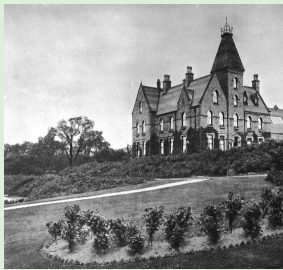
**SUN 19TH 12 PM – 5 PM**

Visit Bagshaw Museum to discover the world in one day! Explore exciting global collections, including the atmospheric Ancient Egyptian 'Kingdom of Osiris', Spirit of South Asia and African galleries and the Victorian seaside. Discover stories from Fox's

Biscuits and iconic Batley Variety Club. Housed in a magnificent Grade II\* listed Victorian Gothic former mill owner's home; award winning Wilton Park has a play area. All ages are welcome.

Family fun on our free self-guided Round the World food trail.

[www.kirklees.gov.uk/bagshawmuseum](http://www.kirklees.gov.uk/bagshawmuseum)



#### NEW EVENT

#### EDIBLE ENGLAND EVENT

### From Ale to Wine Gums: Spenn Valley's Food and Drink Heritage

Cleckheaton Library, Whitcliffe Road, Cleckheaton BD19 3DX

**SAT 18TH 10.30 AM – 1 PM**

Spenn Valley's food and drink heritage includes sweets called Midget Gems and Poor Ben's beer, and the original Fentiman's Botanical Brewers, whose founder Thomas Fentiman lived in Cleckheaton. John Wesley Hillard opened his first Lion grocery store in 1885, the forerunner of Hillards Supermarkets. Come and discover

our tasty edible history with the Friends of Cleckheaton Library!

<https://friendscleckheatonlibrary.wordpress.com>



#### EDIBLE ENGLAND EVENT

### Oakwell Hall



Nova Lane, Birstall, Batley, WF17 9LG

**SAT 11TH 12 PM – 5 PM**

**SUN 12TH 12 PM – 5 PM**

**SAT 18TH 12 PM – 5 PM**

**SUN 19TH 12 PM – 5 PM**

This beautiful Grade I listed Elizabethan manor house, displayed as a family home of the 1690s, offers a rare insight into a post-English Civil War household. See period rooms surprisingly unchanged in over 400 years. Hear the ghost story and discover Charlotte Brontë's inspiration for her 1849 novel Shirley. Explore 100 acres of period gardens and country park, with trails, mountain bike track, playground and picnic areas.

Join us for a trail around Oakwell Country Park where you will learn about a wide variety of edible delights that have been used for centuries in everything from jams to gin. After the trail, visit the Hall and pick up recipe sheets and ideas

on how to make use of these lesser known edible treats. Free trail sheets available from the visitor centre shop. Suitable for all ages and families.

[www.kirklees.gov.uk/oakwell-hall](http://www.kirklees.gov.uk/oakwell-hall)



#### NEW EVENT

#### EDIBLE ENGLAND EVENT

## Red House Yorkshire

FRI 10TH – SUN 19TH

ANY TIME



ONLINE VIA FACEBOOK

Red House Yorkshire Heritage Trust is working with Kirklees Council to offer seasonal activities at the historic Red House at Gomersal, and community activities in The Barn in the future. There will be daily posts on Facebook with an Edible England food theme.

<https://www.facebook.com/redhouseyorkshire>

## St Peter's Church, Hartshead

Church Lane, Hartshead,  
WF15 8EU

SAT 18TH 10 AM – 3.30 PM

SUN 19TH 12.30 PM – 3.30 PM

St Peter's Church is thought to be around 1100 years old, with a short Saxon tower; the two Norman arches date to just under 1000 years ago. Within the large churchyard, with an amazing view, stands an old yew tree from which Robin Hood is



said to have taken his final arrow. The illegally interred remains of some of the Luddites are also said to have been buried in the consecrated church grounds. Patrick Bronte served five years as curate in charge of St Peter's from 1810 and may even be buried on site too. Archived registers will be on display as well as local school records.



## St Saviour's Church, Brownhill



Brookroyd Lane, Batley,  
WF17 0BU

SAT 11TH 11 AM - 3 PM

Grade II listed building of 1871, has unique Victoria and Albert stained glass window (verified by V & A Museum) commemorating Queen Victoria's Diamond Jubilee, depicting the Queen

with Prince Albert. Frieze of Minton tiles. Fine east window. Robert Thompson altar rail. Plaque in memory of locally-born missionary. Fine oil painting of Christ by Hans Richter-Damm. This year marks our 150th anniversary! Leaflets and a file containing documents and photographs of items in the church will be displayed. DVDs featuring the church and other local churches will be shown during the day.



## Whitechapel Church, Cleckheaton



Whitechapel Road, Cleckheaton  
BD19 6HR

SAT 11TH 10 AM – 4 PM

SUN 12TH 11 AM – 4 PM

Whitechapel's site has seen almost 1,000 years of worship, with the current building dating from 1820. See the Norman font, over 900 years old, and the rare Ellison bells. Examine church records going back to 1610, search the graveyard for Brontë relative Rose Heslip's stone, and admire the World War One stained glass windows, funded by parishioners.



## Open Events in the Colne Valley

EDIBLE ENGLAND EVENT

### Colne Valley Museum



Cliffe Ash, Golcar, HD7 4PY

SAT 11TH 11 AM - 5 PM

SUN 12TH 11 AM - 5 PM

Free admission to the Museum and two exhibitions. On Saturday the Havercake Lads, the re-enactment group of the 33rd Regiment of Foot, will make oatcakes (havercakes) in our Victorian kitchen, their staple diet when on manoeuvres. On Sunday our volunteers will demonstrate traditional Colne Valley recipes such as Robin Cake and Ned (Knead) or Fat Cakes.

Exhibitions: In Praise of Makers by artist Ed Kluz; Exploring the History of Your House by the Huddersfield & District Family History Society.

[www.colnevalleymuseum.org.uk](http://www.colnevalleymuseum.org.uk)



NEW EVENT

EDIBLE ENGLAND EVENT

### Edibles - open garden, tour, talk and tea



The Barn, Paddock Farm, Park Gate Road, West Slaithwaite, HD7 5XA

SAT 18TH 10 AM - 6 PM  
(TALK AND TOUR  
11 AM & 3 PM)

SUN 19TH 11 AM - 6 PM  
(TALK AND TOUR  
11 AM & 3 PM)

Take a self-guided walk around our 7 acre farm (with map and notes); or, at 11am and 3pm, join us for a talk and tour. We'll visit our veg plots, forest gardens and polytunnels, exploring how to use permaculture, ecological and no dig approaches to grow food and create habitats. Our pop-up cafe in the Cowshed will serve cream teas, homemade cakes and cordials, teas and coffees. Jams, cordials and honey will also be on sale. Organic veg boxes can be pre-ordered for collection on the day.

[www.edibles.org.uk](http://www.edibles.org.uk)



## St Bartholomew's Church, Marsden

Church Lane, Marsden, HD7 6DJ

SAT 18TH 10 AM - 4 PM

SUN 19TH 11 AM - 4 PM

f ONLINE VIA FACEBOOK

Known as 'The Cathedral of the Colne Valley' the Church was designed by local architect William Henry Crossland, a pupil of Sir George Gilbert Scott but ultimately finished, 1895-1911, by C Hodgson Fowler and said to be his finest parish church. Excellent stained glass windows and mosaic floors. Joint exhibition with Marsden History Group - 'Changing Marsden: 1800 - 1950: Population and Textiles'. Normally archived material also on display, including large churchyard plan and some churchyard records for our family historians! Church tours available throughout the day.

f ONLINE - some items will also be made available online via our Facebook page, [www.facebook.com/Marsden-Parish-Church-St-Bartholomews-148361501959340](https://www.facebook.com/Marsden-Parish-Church-St-Bartholomews-148361501959340)

[www.msos.org.uk](http://www.msos.org.uk)



## St James's Church, Slaithwaite

Church St/Bankgate, Slaithwaite, Huddersfield HD7 5AW

**SAT 18TH 10 AM – 3 PM**

A Georgian building, built 1789 and Grade II listed, with a basilica-like interior and tiered galleries added in early Victorian times. The beautiful and unusual interior will offer old photos and documents, an art exhibition and hopefully refreshments. Among many interesting features are a Venetian window dedicated to Lord Dartmouth and depicting the Good Samaritan.



'Waterloo' or 'Million' Church, including the exceptionally rare Binns organ (which will be played at intervals during the day), our stained glass windows and war memorials. There will be access to our burial records and to family history sites and experienced help. There will be interpretative information around the church, with guides to answer your questions, and access to the churchyard, including Commonwealth War Graves. Themed to 'Edible England' and 'A Taste of Yorkshire', light refreshments will be available to purchase throughout the day.

<http://stjohnschurchgolcar.org>



## Open Events in Dewsbury & Thornhill

**EDIBLE ENGLAND EVENTS**

### Crow Nest Park

Heckmondwike Road, Dewsbury, WF13 2SG

**SAT 11TH 1.30 PM - 3.30 PM**

Growing Works will be offering outdoor cooked pancakes with seasonal topping (in adventure playground).

**BOOKING ESSENTIAL**  
text 07845 415289 or email  
[info@growingworks.org.uk](mailto:info@growingworks.org.uk)

**THURS 16TH 9.30 AM - 4 PM**

Open session in walled garden on growing food to eat.

**SUN 19TH 11 AM - 4 PM**

S2R offer A Taste of the Outdoors (see next event below).

Crow Nest Park was bought by Dewsbury Corporation in 1893 for the 'pleasure and enjoyment of the people of Dewsbury'. Not just the location for leisurely walks and local events, the walled garden and greenhouses produce fruit and vegetables. The Friends of Crow Nest Park support other voluntary local groups to offer imagination, inspiration and understanding of our natural and built inheritance. Take this chance to visit us, get involved and learn more about the Park and its 'edibles'.

[www.facebook.com/groups/1399860056901415](https://www.facebook.com/groups/1399860056901415)



**EDIBLE ENGLAND EVENT**

## St John the Evangelist Church, Golcar

Church St, Golcar, Huddersfield HD7 4PX

**SAT 11TH 10.30 AM - 3.30 PM**

We invite visitors to see some of the unique parts of our



heritage open days

## Can you make Heritage Open Days better in 2022?

We are proud of the way the annual festival now reflects many aspects of the history and culture of the places that make up Kirklees. But could your building or organisation make it better still?

We are keen to strengthen the representation of:

- The district's rich textile and industrial heritage.

- Its many religious traditions, building on strong participation already by the Anglican churches.
- The stories of the diverse migrant communities who have made a home here.

To discuss further, please contact us - without commitment - and we can add you to our mailing list.  
[kirkleeshod@gmail.com](mailto:kirkleeshod@gmail.com)

NEW EVENT

EDIBLE ENGLAND EVENT

## Dewsbury: a taste of the outdoors



Crow Nest Park Walled Garden, Heckmondwike Road, Dewsbury, WF13 2SA

SUN 19TH

11 AM – 4 PM

S2R (Support to Recovery) have put out an open invite to the people of Dewsbury to help us collect the best outdoor cooking recipes the town has to offer. On the day we will be inviting some of the contributors to demonstrate their recipes and tell us a bit about themselves and where these dishes come from, with fire lighting and cooking demonstrations through the day. Being outside and sharing food is great for your well-being!

Part of Dewsbury: Your Health in Mind Project – a project supported by Dewsbury Councillors' Ward budget.



NEW EVENT

## Dewsbury Country Park - Trees and Their Many Uses

Lowfield Road Car Park, Dewsbury Moor, WF13 3SR

SAT 18TH

10 AM

**BOOKING ADVISED**  
Pete Banks, 07814 879240 or peter.banks@kirklees.gov.uk

Join Ranger Pete Banks in a walk around this fantastic green space and learn about all the interesting trees and their uses over history. The event is approximately 2 hours long and everyone is welcome. Under-16s must be accompanied by an adult. Tea, coffee and biscuits provided.



## Dewsbury Bee Line Trail walking tour

Meet at Dewsbury Minster, Vicarage Road, Dewsbury, WF12 8DD

SAT 11TH

WALKS 11 AM & 2PM

**BOOKING ESSENTIAL FOR TOURS (BY 4 SEPT) VIA info@simonreedproductions.com**  
Events near the Town Hall can be enjoyed by all around 11.30 and 2.30.

Dewsbury is mentioned in the Domesday Book with a Minster which dates back to before AD627. The town became prosperous during the 19th century as a Victorian mill town, famous for its recycling of Shoddy and Mungo. Starting at

the Minster, local historian and videographer Simon Reed will discuss the places that made Dewsbury what it is today and introduce you to various historical characters, so be prepared to enter into the past and join in the fun as well as understanding more of our local history. The tour is designed for adults but children are able to pick up their own trail leaflet from Greenwoods, Dewsbury's oldest shop in Church St near the Minster. The tour finishes in Market Place.



NEW EVENT

## Dewsbury Town Hall

Dewsbury Town Hall, Wakefield Old Rd, Dewsbury WF12 8DG

SAT 11TH

TOURS AT 11 PM, 12 PM, 1 PM

**BOOKING ESSENTIAL FOR TOURS VIA townhall.bookings@kirklees.gov.uk**

Experience a behind the scenes tour of Dewsbury Town Hall. Look at various aspects of the building and find out the stories behind the stained glass windows. See the concert hall and the old courtroom.



## Greenwoods - Dewsbury's oldest shop



3 Church St, Dewsbury, WF13 1JJ

SAT 11TH 10 AM - 3 PM

SAT 18TH 10 AM - 3 PM

**BOOKING ESSENTIAL**  
01924 461198 or  
greenwoodclothingjewellery@  
btconnect.com  
(from 1 September)

Dewsbury's smallest and newest museum shows visitors what life was like at Greenwoods Clothing & Jewellery from 1860 to the present day. It contains a range of shop memorabilia, artefacts, biographies and pictures of those who lived and worked here, such that visitors of all ages are able to understand more about local history and the life of their ancestors. The museum is within the historic shop, which still contains much of the original cabinetry from 1860, whilst still a fully functioning shop with a master craftsman working jeweller. Come and meet the famous 'Bolenium Bill', resident in the shop since the 1920s, and see what has changed over his lifetime.

[www.john-greenwood.com](http://www.john-greenwood.com)



## Thornhill Parish Church of St Michael and All Angels

Church Lane, Thornhill, WF12 0JZ

SAT 11TH 10 AM - 4 PM

SUN 12TH 10.30 AM - 11.30 AM  
2.30 PM - 4 PM

The Church of St Michael and All Angels is a historic Grade I listed medieval church with Victorian middle! - created by G E Street. Featuring medieval glass, amazing monuments dated from the 14th century featuring the Savile family, sympathetic re-ordering and churchyard. The latest conservation project will be completed for this weekend by stained glass master craftsman Jonathan Cooke.

[www.thornhillparishchurch.org.uk](http://www.thornhillparishchurch.org.uk)



## Open Events in Holme Valley & Meltham

NEW EVENT

### Holmfirth Graveyard Walk & Talk



Holmfirth Graveyard, Station Rd, Holmfirth, HD9 1AD

SUN 12TH WALK 3 PM

**BOOKING ESSENTIAL**  
Deborah Wyles,  
01484 685997 or debhod21@  
btinternet.com (from 30 Aug)

A chance to learn about the many Holme Valley residents who died between 100 and 200 years ago and their lives and achievements. Local historians have found fascinating facts about some whose headstones you may have passed by many times.



NEW EVENT

EDIBLE ENGLAND EVENT

## How green is our Holme Valley



Meet at Holmfirth Swimming Pool, Huddersfield Rd, Thongsbridge, HD9 3JL

FRI 10TH

6.30 PM

BOOKING ESSENTIAL

Deborah Wyles,  
01484 685997 or debhod21@btinternet.com (from 1 Sept)

A level linear walk into Holmfirth, stopping at a number of planting or artistic schemes along the way. A chance to appreciate the diversity of projects helping to enhance the landscape. May be muddy in parts.



NEW EVENT

EDIBLE ENGLAND EVENT

## Meltham in Focus

Carlile Institute, Huddersfield Rd, Meltham, Holmfirth HD9 4AE

SUN 12TH

11 AM - 4 PM

Exhibitions of archives and photographs. 'Edible Memories'. What were your favourite foods and sweets? What are your memories of food shops? 'Meltham in Lockdown: The Film.': come and experience the stories and experiences of people in Meltham during the Covid 19 Pandemic. The film will be on a loop all day to ensure it's available for everyone to see.



NEW EVENT

## St Mary's Church, Honley



Church St, Honley, Huddersfield HD9 6AH

SAT 11TH

10 AM - 4 PM

A church on the cobbles, the Church of St Mary the Virgin is on an ancient holy site where there have been at least three churches. The present church was constructed in 1843 precisely on the foundations of its predecessor. It was designed by the eminent Yorkshire architect Robert Dennis Chantrell. You are welcome to wander at your leisure, discover the church's historical artefacts, or sit and listen to our wonderful recently restored organ. Or even sit in the old stone stocks outside the church.



NEW EVENT

## Meltham's Historic Landscape

Carlile Institute, Huddersfield Rd, Meltham, Holmfirth HD9 4AE

SAT 11TH

TALK 7.30 PM

Lecture by historian Stephen Caunce, 'Don't Just Look At Your Boots! - Walking Through Meltham's Historic Landscape'. Licensed bar.



## Open Events in Huddersfield Town Centre

NEW EVENT

### A 'great' amongst Victorian architects? Huddersfield's W. H. Crossland

New North Road Baptist Church, New North Parade, Huddersfield, West Yorkshire, HD1 5JU

MON 13TH 7.30 PM

**BOOKING REQUIRED**  
(opens 28 Aug) –  
<https://www.eventbrite.co.uk/e/164730831351>

Many of Huddersfield's best buildings are by local architect William Henry Crossland (1835-1908), including Estate Buildings, Byram Arcade, Kirkgate Buildings (below right) and the old Post Office. Born in Elland and brought up at Longwood House, Netheroyd Hill, he has celebrated national work to his name too, but a poignant personal story. This talk by his biographer, Sheila Binns, will give an overview of Crossland's life and work.

[www.huddersfieldhistory.org.uk](http://www.huddersfieldhistory.org.uk)  
[www.huddersfieldcivicsociety.org.uk](http://www.huddersfieldcivicsociety.org.uk)

NEW EVENT

### Buildings of Huddersfield's C19 'New Town'

Meet at St. George's Square, Huddersfield (Harold Wilson statue), HD1 1JF

SAT 18TH 10.30 AM

**BOOKING ESSENTIAL**  
[discoverhuddersfield.uk/heritage-open-days](https://discoverhuddersfield.uk/heritage-open-days)

Huddersfield's mid-nineteenth century planned New Town led to some remarkable buildings through changes in authority, commerce and technology. Local author Chris Marsden will share stories of significant buildings within the town's designated High St Heritage Action Zone (see p.16), selected from his book *Huddersfield in 50 Buildings* – a new way of looking at the town's development.

<https://discoverhuddersfield.uk>

### Exploring the Town's Ramsden Heritage

Meet outside Huddersfield Parish Church, Byram Street, Huddersfield HD1 1BU

SAT 11TH 10.30 AM

**BOOKING ESSENTIAL**  
[discoverhuddersfield.uk/heritage-open-days](https://discoverhuddersfield.uk/heritage-open-days)

In September 1920, Huddersfield Corporation finalised its purchase of the 4300 acres of the Ramsden estate, bringing an end to the Ramsden family's three-and-a-half centuries as a leading force in the town. Local historian David Griffiths will lead a walk to key sites that illustrate their influence on the town's development. The walk includes steps and a stretch along the canal towpath, so robust footwear is recommended.

<https://discoverhuddersfield.uk>





HM Government

# Hi!

## ST GEORGE'S SQUARE

### Send us your stories

We all have our different memories of Huddersfield's iconic Square and so many things have taken place there. For many people, whether they are coming to Huddersfield to start a new life or just visiting, the Square is the very first thing they see.

From the business carried on in its buildings to royal visits, carnivals, fairs and festivals of light, St George's Square has a colourful history. Music, sport, politics and religion have all played their part.

Huddersfield Local History Society would like you to help tell that story either by contributing your

memories in words or pictures, whether from long ago or yesterday, to our new website [oursquare.org](https://oursquare.org), or by contacting us at [email@oursquare.org](mailto:email@oursquare.org). We are also putting together an illustrated book to be published in 2023 and your memories of the Square could be included.

Huddersfield Local History Society's Memories of Our Square project is supported by Historic England as part of its High Streets Heritage Action Zones [HSHAZ] initiative.

[www.oursquare.org](https://www.oursquare.org)



Historic England



Huddersfield  
Local  
History  
Society

[www.huddersfieldhistory.org.uk](https://www.huddersfieldhistory.org.uk)

**NEW EVENT**

## Huddersfield Heritage Hub

WYAS Kirklees, Unit 1,  
The Piazza Centre, Princess  
Alexandra Walk, Huddersfield  
HDI 2RS (opposite the Library)

SAT 11TH	11 AM - 4 PM
MON 13TH	9.30 AM - 4 PM
TUES 14TH	9.30 AM - 4 PM
THURS 16TH	9.30 AM - 4 PM
FRI 17TH	9.30 AM - 4 PM

A welcoming information point and exhibition space hosted by the Kirklees Archive Service, featuring:

- Huddersfield High Street Heritage Action Zone and Heritage Open Days information (also available at the mobile Cholavan in St George's Square – Saturdays 11th and 18th).
- 'The Town That Bought Itself' exhibition, exploring the history of the Ramsden family and the famous sale of their Huddersfield estate to the Council in 1920, with original archives.
- Memories of our Square exhibition and collection point for you to have your memories of St. George's Square preserved (see left for more details of the project).

Drop in during times below

SAT 11TH	2 PM - 4 PM
TUES 14TH	11.30 AM - 2 PM
FRI 17TH	11.30 AM - 2 PM

- Huddersfield Local History Society and partners local book stall.

[www.wyjs.org.uk/archive-service](http://www.wyjs.org.uk/archive-service)



**NEW EVENT**

## Huddersfield Textile Walk



Meet outside the Hart (White Hart Inn), Cloth Hall St, Huddersfield HD1 2DX

SUN 12TH 2.30 PM

**BOOKING ESSENTIAL**  
[discoverhuddersfield.uk/heritage-open-days](http://discoverhuddersfield.uk/heritage-open-days)

The label 'Made in Huddersfield' became a global brand synonymous with the quality woollen and worsted textile industry. Join Carol Hardy and Julie Mahoney for a walk that explores some of the major locations associated with the textile manufacturing industry. We begin at the site of the old Cloth Hall and visit buildings and locations that are woven into the textile heritage of Huddersfield, including a mill which opened in 1846 and is still operating today. A stroll along the canal will take us past sites of former mills and converted mill buildings, ending at the top of Queen Street South.

<http://discoverhuddersfield.uk>

## Huddersfield Town Hall

Corporation Street,  
Huddersfield, HD1 2TA

SAT 18TH TOURS  
11 AM, 12 PM, 1 PM

**BOOKING ESSENTIAL VIA**  
[townhall.bookings@kirklees.gov.uk](mailto:townhall.bookings@kirklees.gov.uk)

Behind the scenes tour of Huddersfield Town Hall. A chance to take a closer look at public areas and also some areas which are not usually accessible, including part of the Civic silverware collection, portrait of Queen Victoria, the various commemorative plaques around the building, features of the Concert Hall including the Father Willis Organ, and the cells of the former Court Room located in the basement of the building.



**NEW EVENT**

## The Irish in Huddersfield



Meet at St. George's Square, Huddersfield (Harold Wilson statue), HD1 1JF

SUN 19TH 2.30 PM

**BOOKING ESSENTIAL**  
[discoverhuddersfield.uk/heritage-open-days](http://discoverhuddersfield.uk/heritage-open-days)

John Lambe explores places associated with Irish immigrants who came to work on the canals, in textiles, construction and recently, to study at the University. The walk includes a tour of St. Patrick's Church. After the walk a free short film, 'The Connemara Connection', will be shown at the Irish Centre, 86 Fitzwilliam Street, HD1 5BB at 4.30 pm. The walk does involve some steps.

<http://discoverhuddersfield.uk>



HM Government

# HUDDERSFIELD HIGH STREET HERITAGE ACTION ZONE

## #HuddsHSHAZ #HistoricHighStreets

Funded by Historic England (HE) and Kirklees Council, the four-year Huddersfield High Street Heritage Action Zone (HSHAZ) (2020-24) focuses on the renovation of two key buildings in and around St George's Square – the George Hotel and Estate Buildings. Alongside the physical works, HE has also funded a Cultural Programme centred around the Square

to celebrate many aspects of the town's heritage, including a Hi!HAZ Active series of activities. The events during Heritage Open Days are set out below. Further information on the Heritage Action Zone will be available at the Huddersfield Heritage Hub (see p. 15) and from the Cholan, located in the Square on Saturdays 11th and 18th September.

Date	Times	Place	Event
SAT 11TH	10 AM – 5 PM	Arcade Coffee & Food, Byram Arcade, HD1 1ND	<p><b>Family sign writing workshop</b></p> <p>An introduction to the history of the HAZ area and the skills of sign writing - each attendee to leave with their own painted sign, in Gothic Bold Lettering.</p> <p>Accessible to all age groups, has wheelchair access. Anyone under the age of 16 needs to be accompanied by an adult (for younger children it might be just a colouring in exercise).</p> <p><b>BOOKING REQUIRED -</b> <a href="http://www.eventbrite.co.uk/e/165410289629">www.eventbrite.co.uk/e/165410289629</a></p>
SAT 11TH	1 PM – 1.30 PM	St George's Square	<p><b>Huddersfield Carnival celebrates Huddersfield</b></p> <p>Huddersfield Carnival Collaboration dances and Carnival Queen will perform in costumes themed “Huddersfield to the World” celebrating the Rugby World Cup its links to Huddersfield as the birthplace of Rugby League. Dancers’ costumes and the large showpiece costume are funded by Historic England and the Arts Council.</p>
MON 13TH	12.30 PM – 1.30 PM	St George's Square (Harold Wilson statue)	<p><b>Huddersfield Heritage Mile</b></p> <p>A short walk of just over a mile (one hour), based on the Huddersfield Town Centre Heritage Trail, taking in many of the historic buildings, learning of the town's growth and in particular the influence of the Ramsden family upon the Town. Led by HAZ project officer John Lambe.</p> <p><b>BOOKING REQUIRED</b> <a href="http://www.eventbrite.co.uk/e/165746561427">www.eventbrite.co.uk/e/165746561427</a></p>



Historic England

# Hi! CULTURE

TUES 14TH	12.30 PM – 1.30 PM	St George's Square (Harold Wilson statue)	<b>Huddersfield Heritage Mile</b> See Mon 13th
WED 15TH	12.30 PM – 1.30 PM	St George's Square (Harold Wilson statue)	<b>Huddersfield Heritage Mile</b> See Mon 13th
WED 15TH	6 PM	Arcade Beers, 6 Station St, HD1 1LN	<b>Huddersfield Heritage 5K run</b> An extension of the Heritage Mile, taking in the Canal and Greenhead Park too. The run is suitable for all abilities, and offered by Mikkeller Running Club.  <b>BOOKING REQUIRED –</b> <b><a href="http://www.eventbrite.co.uk/e/165413188299">www.eventbrite.co.uk/e/165413188299</a></b>
WED 15TH	8 PM	Byram Arcade, HD1 1ND	<b>Run for the Mills</b> Charles Smith, Head of Region for Historic England, will share his personal lockdown mission to run to 150 historic mills from his Huddersfield home. He will showcase the plight of mills today, from ruinous remains to thriving places where people work, live and play, and challenge us to consider how these historic and cultural landmarks can be 21st century engines of prosperity.  <b>BOOKING REQUIRED –</b> <b><a href="http://www.eventbrite.co.uk/e/run-for-the-mills-tickets-16541444055">www.eventbrite.co.uk/e/run-for-the-mills-tickets-16541444055</a></b>
THURS 16TH	12.30 PM – 1.30 PM	St George's Square (Harold Wilson statue)	<b>Huddersfield Heritage Mile</b> See Mon 13th
FRI 17TH	4 PM – 5 PM	St George's Square (Harold Wilson statue)	<b>Huddersfield Heritage Mile</b> See Mon 13th
FRI 17TH	6 PM – 7.30 PM  7.30 PM – 9 PM	Northern Quarter, 28 - 30 Wood St, HD1 1DU	<b>Townsounds</b> Let's Go Yorkshire in collaboration with Huddersfield Carnival, Axis Valv-a-tron and Northern Quarter presents 'TOWNSOUNDS Street Party', a celebration of Huddersfield's reggae sound system culture!  6.00 -7.30 family event outdoors 7.30 – 9.00 reggae dance outdoors
SAT 18TH	6 PM – 7.30 PM  7.30 PM – 9 PM	Northern Quarter, 28 - 30 Wood St, HD1 1DU	<b>Townsounds</b> See Fri 17th  The family event on Saturday (6.00 -7.30) will also feature the Huddersfield Carnival showpiece from the mas band.

NEW EVENT

## Kirklees Archives Open Day



WYAS Kirklees, Unit 1,  
The Piazza Centre, Princess  
Alexandra Walk, Huddersfield  
HD1 2RS (opposite the Library)

MON 13TH 1 PM – 4 PM

Go behind the scenes with the West Yorkshire Archive Service Kirklees team to explore the treasures and professional practices of your archive service. Showcasing the exciting 'Creating Kirklees' cataloguing project, the team will reveal how Kirklees' unique archives are conserved and made accessible for current and future generations to discover and enjoy! Drop in to join regular demonstrations.

[www.wyjs.org.uk/archive-service](http://www.wyjs.org.uk/archive-service)



## Lawrence Batley Theatre

Queen St, Huddersfield  
HD1 2SP

FRI 10TH	TOURS 11 AM & 2 PM
SAT 11TH	TOURS 11 AM & 2 PM
THURS 16TH	TOUR 2 PM
SUN 19TH	TOURS 11 AM & 2 PM

**BOOKING ESSENTIAL**  
[www.thelbt.org](http://www.thelbt.org) or email  
[betty@thelbt.org](mailto:betty@thelbt.org)

Discover the 200+ years of rich history within the walls of the theatre. Built as a Wesleyan Mission in the early 1800s, the church was then the largest Methodist chapel in the world. Now grade II\* listed, it is jam-packed with fascinating history and notable names. During your one-hour tour you'll discover how the building was converted into a theatre in the early 1990s, how the technicians make our shows look and sound great, and where our performers get ready to entertain you. You'll also get the very first look at the renovated spaces following our capital redevelopment project, A Theatre For Tomorrow, this summer. After the tour, the Courtyard Café-Bar offers a large range of delicious local produce.

[www.thelbt.org](http://www.thelbt.org)



NEW EVENT

## Platform 1 Mental Health Services



St George's Square,  
Huddersfield, HD1 1JF (next to  
Head of Steam pub)

FRI 10TH	10.30 AM, 11.30 AM, 12.30 PM, 2 PM
MON 13TH	10.30 AM, 11.30 AM, 12.30 PM, 2 PM
WED 15TH	10.30 AM, 11.30 AM, 12.30 PM, 2 PM
THURS 16TH	10.30 AM, 11.30 AM, 12.30 PM, 2 PM
FRI 17TH	10.30 AM, 11.30 AM, 12.30 PM, 2 PM

**BOOKING NOT REQUIRED**  
but numbers on each tour  
limited

Platform 1 is a unique mental health project offering support when life becomes difficult. This is our community centre for men, who meet for varied activities in two heritage railway vehicles, a Pullman coach and the first ever Pacer Train! It is a working site but you are welcome to visit, learn about what we do, enjoy our railway heritage and perhaps have a Pacer train driving lesson! Come and learn about how heritage trains help many people as their journeys combine!

<https://platform-1.co.uk/>



## St Peter's Parish Church



Byram St, Huddersfield  
HDI 1BU

**MON 13TH – FRI 17TH**  
**10 AM – 2 PM**

The site is free to explore but guided tours (approx. 1 hour) must be pre-booked – 01484 427964 or office@huddersfieldparishchurch.org

The Grade II\* church is the third on the site and dates from 1836. Several features date from the second church, consecrated in 1506, including the Elizabethan font and 16th century wood panelling. The chancel features a baldacchino and East window by Sir Ninian Comper (1923). A large balcony with fine stained glass can be accessed during the visits. The ceiling has fine details and interesting bosses; there is a fine Conacher organ dating from the early 20th century, a significant collection of 'Mouseman' oak furniture and a "Teddy Trail" for families and children.

[huddersfieldparishchurch.org](http://huddersfieldparishchurch.org)



## Open Events in Huddersfield (beyond the ring road)

EDIBLE ENGLAND EVENT

### All Hallows Church, Almondbury



2 Westgate, Almondbury,  
Huddersfield HD5 8XE

**SAT 11TH 10 AM – 4 PM**

**SUN 12TH 2 PM – 4 PM**

The church is a medieval building with superb wooden ceiling, fine medieval glass, good quality Victorian windows and possesses several 'Mouseman' (Thompson of Killburn) carved pieces. It has links to the Kayes and Dartmouths of Woodsome Hall. Visit an exhibition of Yorkshire foods. Enjoy a cafe connected with the above. Follow a children's trail round the church and churchyard. Visit the bell tower ringing chamber not normally open to the public. Guides will be available throughout the event.



NEW EVENT

EDIBLE ENGLAND EVENT

## Allotments, Orchards, Dikes and Shrogs



Birkby & Fartown Library, Lea  
Street, Hillhouse, HD1 6HF

WED 15TH

WALK 1 PM

BOOKING ESSENTIAL VIA  
Ticketsource -  
[www.ticketsource.co.uk/  
kirkleeslibraries](http://www.ticketsource.co.uk/kirkleeslibraries)

Join Lorna Brooks of Kirklees Local Studies Library for a local history walk to explore the hidden green spaces of Birkby past and present. Starting at the new library with its edible garden we will follow footpaths and back lanes to discover the history of growing places and wild areas. An alternative look at Birkby's history and geography. Duration 1.5-2 hours.

Walk not suitable for wheelchair users. Dogs welcome. Library and garden have wheelchair access and accessible toilets.

## Beaumont Park



**SUN 12TH** 2 PM & 4 PM

**SUN 19TH** 2 PM & 4 PM

Learn about the history and heritage of Beaumont Park, from its Victorian origins to the present day. In 1879, Henry Frederick Beaumont offered land at Dungeon Wood for the creation of Huddersfield's first public park. Opened in 1883 and well-loved by the people of Huddersfield, it goes from strength to strength as the Friends of Beaumont Park work together with Kirklees Council to bring about improvements, including the Nature Story Trail and the brand new play area under construction.



**NEW EVENT**

**EDIBLE ENGLAND EVENT**

### Celebration of Wild Plants

Wakefield Road allotments, Dalton, HD5 9XN (down track next to 505 Hairdressers)

**SAT 18TH** 2 PM – 4 PM

**BOOKING ESSENTIAL**  
text 07845 415289 or email  
info@growingworks.org.uk

Growing Works will be offering foraging, plant identification, discussing benefits and uses of wild plants, along with sampling different herbal or fruit teas.

## King James's School



St. Helen's Gate,  
Almondbury, HD4 6SG

**SAT 18TH** 10 AM – 2 PM

The original school of 1547, the Old School House rebuilt in the 1750s and Victorian additions are all still in use. Visitors can walk round the old dormitories and the rooms of the Old School House. This year we feature the link between the School and the formation of the Rugby Football League in 1895, with the Head of King James's playing a very significant role in its break-away from the Rugby Football Union. We will also be showing how the School, which was a boarding school up to 1922, coped with the lack of food during the Great War.

[www.kingjames.org.uk](http://www.kingjames.org.uk)



## Lindley Clock Tower

6 Lidget St, Huddersfield,  
HD3 3JB

**SAT 11TH** 10 AM - 2 PM

Lindley Clock Tower was erected in 1902 by local industrialist James Nield Sykes and designed in the Art Nouveau style by Manchester-based

architect Edgar Wood, who was Sykes' nephew. A Grade II\* listed building, it has extensive Art Nouveau decoration by sculptor T Stirling Lee. Tours will take 15 minutes and involve climbing 69 steps.

[www.lindleygroup.org.uk](http://www.lindleygroup.org.uk)

**NEW EVENT**

## St Hilda's Church, Cowcliffe and local history



139 Netheroyd Hill Rd,  
Huddersfield HD2 2LX

**SAT 11TH** 10 AM - 4 PM

Opened as a school in 1856, this was the first building designed by local resident and architect W.H. Crossland (1835-1908), who went on to design many celebrated buildings in Huddersfield and elsewhere in the country (see also talk, p.13), his most famous being the Royal Holloway College, Egham, Surrey. Visual displays and presentations will tell a comprehensive story of isolated villages scattered with farms and quarries. The London Road skirted the nearby Fixby estate with its Thornhill and Oastler connections.



## St John the Evangelist Church, Birkby



St John's Road, Huddersfield, HD1 5EA

FRI 10TH	10 AM - 2 PM
SAT 11TH	10 AM - 2 PM
FRI 17TH	10 AM - 2 PM
SAT 18TH	10 AM - 2 PM

Have a look round our Grade II\* listed building, with its magnificent stained glass windows. Designed by architect William Butterfield, one of England's most notable practitioners of the High Victorian style of architecture, its construction was entrusted to Joseph Kaye, the 'builder of Huddersfield'. It was endowed by the locally dominant landowners the Ramsden family, the foundation stone being laid in 1851 by Sir John William Ramsden. Join us for a cup of tea or coffee whilst you listen to our superb 3 manual pipe organ.

[www.stjohnsbirkby.org.uk](http://www.stjohnsbirkby.org.uk)



## St Stephen's Church, Lindley

Lidget Street, Lindley HD3 3JB

SAT 18TH 10.30 PM - 5 PM

St Stephen's is a Grade II listed building designed by renowned local architect John Oates, and built in 1829 by Joseph Kaye, known as the 'Builder of Huddersfield'. Discover the heritage of St Stephen's - including its Mouseman of Kilburn furnishings - and the community it serves. Refreshments will be available throughout the day, alongside stalls and games for the whole family.

[www.facebook.com/ststephenslindley](http://www.facebook.com/ststephenslindley)



## Victoria Tower, Castle Hill

Hillside, Lumb Lane, Almondbury HD4 6TA

SAT 18TH 12 PM - 4.30 PM

SUN 19TH 12 PM - 4.30 PM

Perched on Castle Hill, Victoria Tower was completed in 1899 to celebrate the 60th anniversary of Queen Victoria's reign. The tower was renovated in 1960 when the top seven feet were removed, and now reaches almost 997 feet above sea level. Castle Hill contains diverse wildlife habitats and is a designated Local Nature Reserve.

[www.kirklees.gov.uk/castlehill](http://www.kirklees.gov.uk/castlehill)



EDIBLE ENGLAND EVENT

## Tolson Memorial Museum



Ravensknowle Park, Wakefield Road, Huddersfield HD5 8DJ

SAT 11TH 12 PM - 5 PM

SUN 12TH 12 PM - 5 PM

SAT 18TH 12 PM - 5 PM

SUN 19TH 12 PM - 5 PM

Amazing objects chart Huddersfield's history from the Iron Age to the boom in the textile industry. See vintage vehicles. Don't miss our photographic exhibition, 'A Woman's Work is Never Done', exploring the working lives of late 19th and early 20th century women as they fought for equal opportunities and better conditions. Galleries include our World War I and Suffragist exhibitions and the taxidermy 'half animals'. Park, playground and shop.

Family fun on our free self-guided food trail around the museum.

[www.kirklees.gov.uk/museums/tolsonmuseum](http://www.kirklees.gov.uk/museums/tolsonmuseum)



**NEW EVENT**

**EDIBLE ENGLAND EVENT**

## 'Udders Orchard Cidery

70a Acre Street, Lindley, HD3 3HA

**SAT 11TH** TALKS AT  
12.30 PM & 2.30 PM

**BOOKING ESSENTIAL VIA**  
[uddersorchardcider.co.uk/hod](http://uddersorchardcider.co.uk/hod)  
(room for more sessions if demand exists)

A 30 minute or so informal ramble through the world of cidermaking and cider - its history and its place in culture. Get to see the equipment and try a sample of the produce that we make here in Lindley. Opportunity to buy cider; no purchase necessary!



**NEW EVENT**

## Walking the Banks of the River Colne

Steps down to the Riverside Way at Kingsbridge, Kings Bridge Road, HD1 3AY.

**SAT 11TH** 2.30 PM

**BOOKING ESSENTIAL VIA**  
[discoverhuddersfield.uk/heritage-open-days](http://discoverhuddersfield.uk/heritage-open-days)

The Greenstreams Project has been restoring and upgrading the Riverside Way, improving riverside greenspaces and access to the river and promoting walking and cycling routes. With river water quality improvements, wildlife is also

returning to our rivers in urban Huddersfield. Come and find out more along this 1.25 mile one way walk as we follow the river along surfaced footpaths. The walk will finish at the John Smiths Stadium, HD1 6PG.

<https://discoverhuddersfield.uk>

## Open Events in Kirkburton & Denby Dale

### All Hallows' Church, Kirkburton



Huddersfield Rd, Kirkburton, HD8 0TE

**SAT 11TH** 10 AM - 4 PM

All Hallows' Church, a beautiful and significant medieval building, stands in a Green Flag award-winning Churchyard. Get involved and sign up to our 'Adopt a Grave' programme. Research your family history via the Burial Ground Project, with guidance from members of the Kirkburton History Group. Music throughout the day will be provided by Philip Sutcliffe (organist) and members of Hade Edge Band, who will play in the afternoon. There will be Bell Tower Tours and the Bell Tower

team will demonstrate the art of Bell Ringing. Refreshments will be served throughout the day.

[www.allhallowschurch.com](http://www.allhallowschurch.com)



### Emmanuel Church, Shelley



Huddersfield Road, Shelley, Huddersfield, HD8 8LH

**SAT 18TH** 10.30 AM - 3 PM

A lovely grade II listed Church, where everyone will be welcome at our fun-filled day "Respect Nature", a celebration of our beautiful environment, with nature-themed craft activities for children throughout the day and an opportunity to sow seeds in our wildlife garden. Visit the bell tower and try bell ringing. HLF funded Graveyard Mapping information for visitors. Talks by Shelley Hedgehogs (am) and the RSPB (pm). Refreshments throughout the day.

[www.emmanuelchurchshelley.co.uk](http://www.emmanuelchurchshelley.co.uk)



## High Flatts Quaker Meeting House

Firth Lane, High Flatts,  
HD8 8XU

THURS 16TH	10 AM - 5 PM
FRI 17TH	10 AM - 5 PM
SAT 18TH	10 AM - 5 PM
SUN 19TH	12.30 PM - 5 PM

Very early Quaker meeting house, c. 1653. Situated in a hamlet which was, until recently, exclusively Quaker owned. The building is built in local stone and can offer spectacular views of the rolling countryside. Guided nature tours of the area available upon request, featuring reflections upon local historical agriculture and rural industry, along with a look at a 1932 typhoid epidemic and the original village water supply driven by water power.

[www.highflattsquakers.org.uk](http://www.highflattsquakers.org.uk)



## Skelmanthorpe Textile Heritage Centre

6 Queen Street, Skelmanthorpe,  
HD8 9DU

THURS 16TH	12 PM - 5 PM
FRI 17TH	12 PM - 5 PM
SAT 18TH	10 PM - 4 PM
SUN 19TH	10 AM - 4 PM

**BOOKING ESSENTIAL**  
email [richardwbrook@gmail.com](mailto:richardwbrook@gmail.com)  
or 01484 606275

This small textile heritage centre comprises the family living-quarters, maintained and furnished as a West Riding weaver's family home would have been c1900. Upstairs is an authentic hand loom in working condition, along with fascinating displays & artefacts linked to our textile history. Guides will be present and there will be loom demonstrations Friday & Saturday 1pm-4pm, Sunday 10am - 1pm. Visits will last about one

hour. In view of the confined space visitors will be limited to 4 at a time. Leaflets for self-guided walks along the Skelmanthorpe Village Trail will be available.

<https://fosthc.wixsite.com/skeltexheritage>



This brochure has been compiled, produced and distributed by the Kirklees HOD Committee, comprising the Kirklees Council Libraries and Museums & Galleries Services and the following voluntary organisations. If you would like to take part in future Heritage Open Days, you can contact us by emailing [kirkleeshod@gmail.com](mailto:kirkleeshod@gmail.com)



Discover Huddersfield  
[discoverhuddersfield.uk](http://discoverhuddersfield.uk)



Friends of Crow Nest  
Park, Dewsbury  
[facebook.com/groups/  
1399860056901415](https://facebook.com/groups/1399860056901415)



Holme Valley  
Civic Society  
[holmefirthehistory.org.uk](http://holmefirthehistory.org.uk)



Huddersfield Civic Society  
[huddersfieldcivicsociety.org.uk](http://huddersfieldcivicsociety.org.uk)



Huddersfield Local  
History Society  
[huddersfieldhistory.org.uk](http://huddersfieldhistory.org.uk)



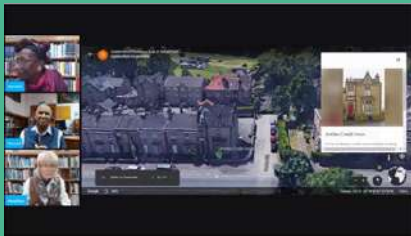
Spenn Valley Civic Society  
[spennvalleycivicsociety.org.uk](http://spennvalleycivicsociety.org.uk)

# We are: open

## Welcome back to the library!

You can find opening hours for all our libraries at [www.kirkleeslibraries.co.uk](http://www.kirkleeslibraries.co.uk).

Interested in local history and heritage? We've got some great resources for you...



Virtual walks with local historians, including trails around Birstall Co ops, Huddersfield s Caribbean Heritage and a Textile Trail.  
[www.youtube.com/c/kirkleeslibraries](http://www.youtube.com/c/kirkleeslibraries).

Free Ancestry access for library members, both in the library and at home.



Contact Kirklees Local Studies Library on 01484 414868 or [localstudies.library@kirklees.gov.uk](mailto:localstudies.library@kirklees.gov.uk) for more information about our collections.

We are:  
**Kirklees  
Libraries.**

